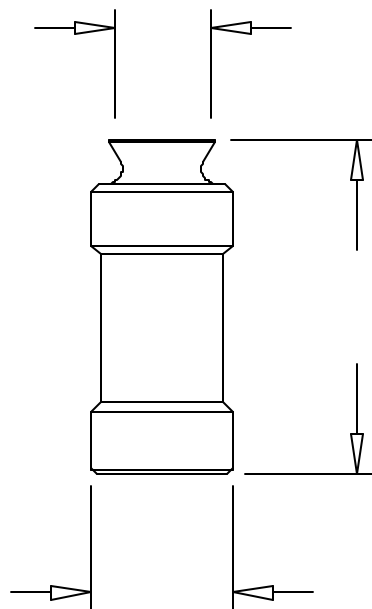


# meaden

---

---

## Standard File Hole Dies

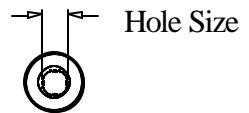
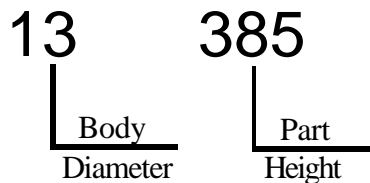
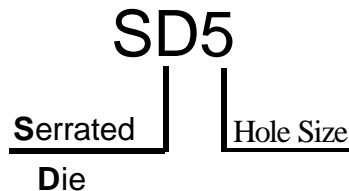
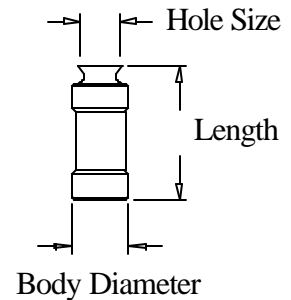
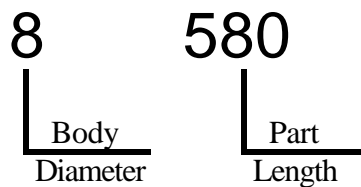
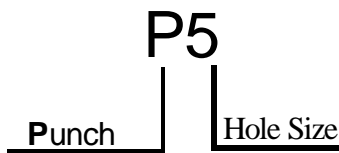


**meaden**  
Products for the Printing Industry  
210 West 83rd Street  
Burr Ridge, Illinois 60521  
Telephone: 630/655-0888  
FAX: 630/655-3012  
[www.meadenprinting.com](http://www.meadenprinting.com)

# HOW TO ORDER from **meaden**

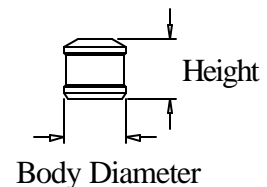
Our part numbering system is designed to be descriptive, accurate and easy to use.

Example: Part Number P5-8-580 punch or Part Number SD5-13-385 die.



The first letter indicates the item:

- P** = Punch
- DP** = Longlife Punch (DuraPunch)
- SD** = Serrated Die
- D** = plain Die
- DD** = Long Life Die (DuraDie)



The first set of numbers indicates the size of the hole measured to the nearest 1/32 of an inch.

For example: **5** = 5/32" = .156",  
**6** = 6/32" (3/16") = .187"

The second set of numbers indicates the body diameter of the part measured to the nearest 1/32 of an inch.

For example: **8** = 8/32" (1/4") = .250",  
**13** = 13/32" or = .406"

The last set of numbers indicates the length or height of the part measured as a decimal inch.

For example: **580** = .580 inches long  
**385** = .385 inches long

It is always helpful to identify the press that the part is used with. Most round dies are stocked as serrated. Where plain dies are available, the 'D' is used without the 'S' to indicate a plain die.

## **Meaden Return Policy**

Stocked, standard catalog items may be returned within 30 days of invoice, subject to a 10% restocking charge. All returns must be in resellable condition and in their original packaging. Open packages are not returnable. An Authorized Return Form (ARF) number must be issued before a return will be accepted. Credits will be issued only after the approval of Quality Control. Any product that does not meet these requirements will be returned to the customer.

No specials of any kind are returnable! Specials made per your instructions are not stock items, and not returnable. Examples of specials are irregular shaped punches and dies, and all special cut perforator wheels.

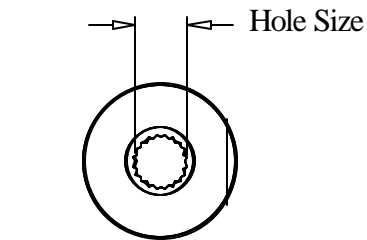
**ALL PRICES SUBJECT TO CHANGE WITHOUT NOTICE!**

# File Hole Dies

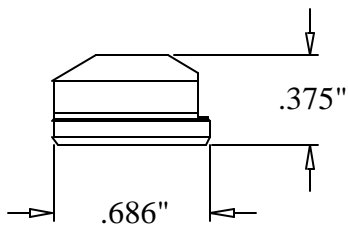
<b>press brand</b>	<b>page no.</b>
<b>A.T.F.</b> .....	<b>52</b>
<b>ASHTON</b> .....	<b>51</b>
<b>DIDDE</b> .....	<b>52</b>
<b>DRENT</b> .....	<b>51</b>
<b>GOEBEL</b> .....	<b>53</b>
<b>HAMILTON</b> .....	<b>50</b>
<b>IMER</b> .....	<b>51</b>
<b>KLUGE</b> .....	<b>52</b>
<b>MEISEL</b> .....	<b>52</b>
<b>MIYAKOSHI</b> .....	<b>51</b>
<b>MORGAN</b> .....	<b>51</b>
<b>MULLER/MARTINI</b> .....	<b>51</b>
<b>RDP MARATHON</b> .....	<b>51</b>
<b>ROTATEK</b> .....	<b>51</b>
<b>SANDEN</b> .....	<b>51</b>
<b>SCHRIBER/HARRIS</b> .....	<b>51</b>
<b>STEVENS</b> .....	<b>51</b>
<b>SUPER WEB</b> .....	<b>52</b>
<b>TAIYO</b> .....	<b>51</b>
<b>WESTERN GEAR C3C</b> .....	<b>52</b>
<b>WESTERN GEAR SPEEDFLEX</b> .....	<b>54</b>
<b>WITT</b> .....	<b>52</b>

## Punches & Dies

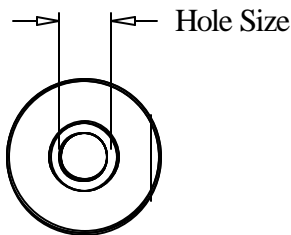
### HAMILTON



Serrated File Hole Dies



Plain File Hole Dies  
( non serrated )



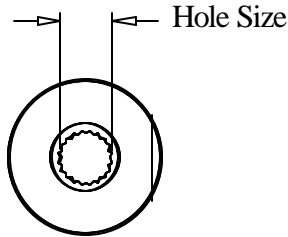
#### Serrated File Hole Dies

Hole Size	Part Number	Diameter	Height
1/8"	SD4 - 22 - 375	.686"	.375"
5/32"	SD5 - 22 - 375	.686"	.375"
3/16"	SD6 - 22 - 375	.686"	.375"
7/32"	SD7 - 22 - 375	.686"	.375"
1/4"	SD8 - 22 - 375	.686"	.375"
9/32"	SD9 - 22 - 375	.686"	.375"
5/16"	SD10 - 22 - 375	.686"	.375"
11/32"	SD11 - 22 - 375	.686"	.375"
3/8"	SD12 - 22 - 375	.686"	.375"
13/32"	SD13 - 22 - 375	.686"	.375"
7/16"	SD14 - 22 - 375	.686"	.375"
1/2"	SD16 - 22 - 375	.686"	.375"

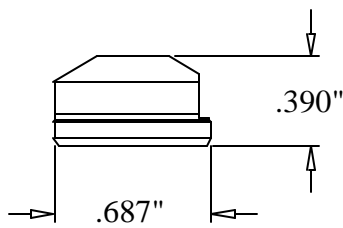
#### Non Serrated File Hole Dies

Hole Size	Part Number	Diameter	Height
1/4"	D8 - 22 - 375	.686"	.375"
5/16"	D10 - 22 - 375	.686"	.375"

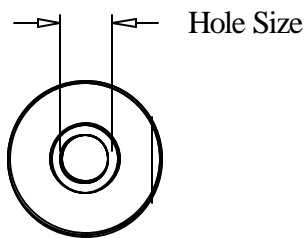
## Punches & Dies



Serrated File Hole Dies



Plain File Hole Dies  
( not serrated )



### Serrated File Hole Dies

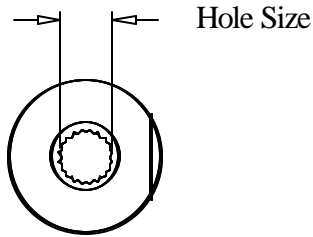
Hole Size	Part Number	Diameter	Height
1/8"	SD4 - 22 - 390	.687"	.390"
5/32"	SD5 - 22 - 390	.687"	.390"
3/16"	SD6 - 22 - 390	.687"	.390"
7/32"	SD7 - 22 - 390	.687"	.390"
1/4"	SD8 - 22 - 390	.687"	.390"
9/32"	SD9 - 22 - 390	.687"	.390"
5/16"	SD10 - 22 - 390	.687"	.390"
11/32"	SD11 - 22 - 390	.687"	.390"
3/8"	SD12 - 22 - 390	.687"	.390"
13/32"	SD13 - 22 - 390	.687"	.390"
7/16"	SD14 - 22 - 390	.687"	.390"
1/2"	SD16 - 22 - 390	.687"	.390"

### Plain File Hole Dies

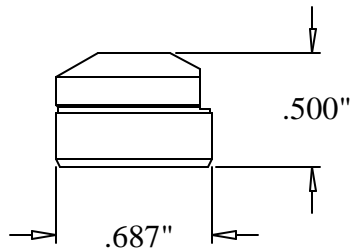
Hole Size	Part Number	Diameter	Height
1/4"	D8 - 22 - 390	.687"	.390"
5/16"	D10 - 22 - 390	.687"	.390"

**ASHTON, DRENT  
GRAPHA/  
MULLER/MARTINI  
SCHRIBER/HARRIS  
IMER  
MIYAKOSHI  
MORGAN  
RDP MARATHON  
ROTATEK, SANDEN,  
STEVENS, TAIYO**

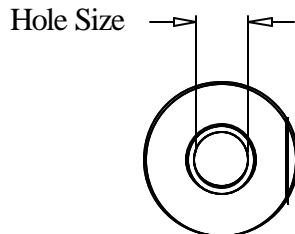
## Punches & Dies



Serrated File Hole Die



Plain File Hole Die  
( not serrated )



### Serrated File Hole Dies

Hole Size	Part Number	Diameter	Height
1/8"	SD4 - 22 - 500	.686"	.500"
5/32"	SD5 - 22 - 500	.686"	.500"
3/16"	SD6 - 22 - 500	.686"	.500"
7/32"	SD7 - 22 - 500	.686"	.500"
1/4	SD8 - 22 - 500	.686"	.500"
9/32"	SD9 - 22 - 500	.686"	.500"
5/16"	SD10 - 22 - 500	.686"	.500"
11/32"	SD11 - 22 - 500	.686"	.500"
3/8"	SD12 - 22 - 500	.686"	.500"
13/32"	SD13 - 22 - 500	.686"	.500"
7/16"	SD14 - 22 - 500	.686"	.500"
1/2"	SD16 - 22 - 500	.686"	.500"

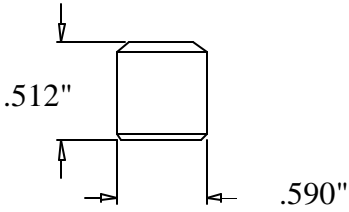
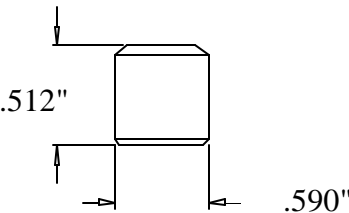
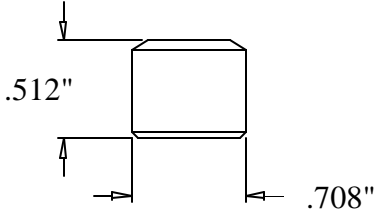
### Plain File Hole Dies

Hole Size	Part Number	Diameter	Height
1/4"	D8 - 22 - 500	.686"	.500"
5/16"	D10 - 22 - 500	.686"	.500"

**A.T.F.**  
**DIDDE**  
**KLUGE**  
**MEISEL**  
**SUPERWEB**  
**WESTERN GEAR C3C**  
**WITT**

## Punches & Dies

### GOEBEL

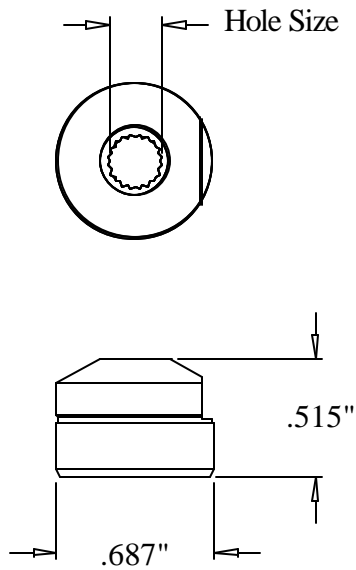


#### File Hole Dies

Hole Size	Part Number	Diameter	Length
5.5 mm	15126	.708	.512
6.0 mm	15667	.590	.512
8.0 mm	15669	.590	.512

## Punches & Dies

### WESTERN GEAR



#### Serrated File Hole Dies

Hole Size	Part Number	Diameter	Height
1/8"	SD4 - 22 - 515	.686"	.515"
5/32"	SD5 - 22 - 515	.686"	.515"
3/16"	SD6 - 22 - 515	.686"	.515"
7/32"	SD7 - 22 - 515	.686"	.515"
1/4	SD8 - 22 - 515	.686"	.515"
9/32"	SD9 - 22 - 515	.686"	.515"
5/16"	SD10 - 22 - 515	.686"	.515"
11/32"	SD11 - 22 - 515	.686"	.515"
3/8"	SD12 - 22 - 515	.686"	.515"
13/32"	SD13 - 22 - 515	.686"	.515"
7/16"	SD14 - 22 - 515	.686"	.515"
1/2"	SD16 - 22 - 515	.686"	.515"

Speedflex



# STOCK SPECIAL SHAPES TRIANGLES

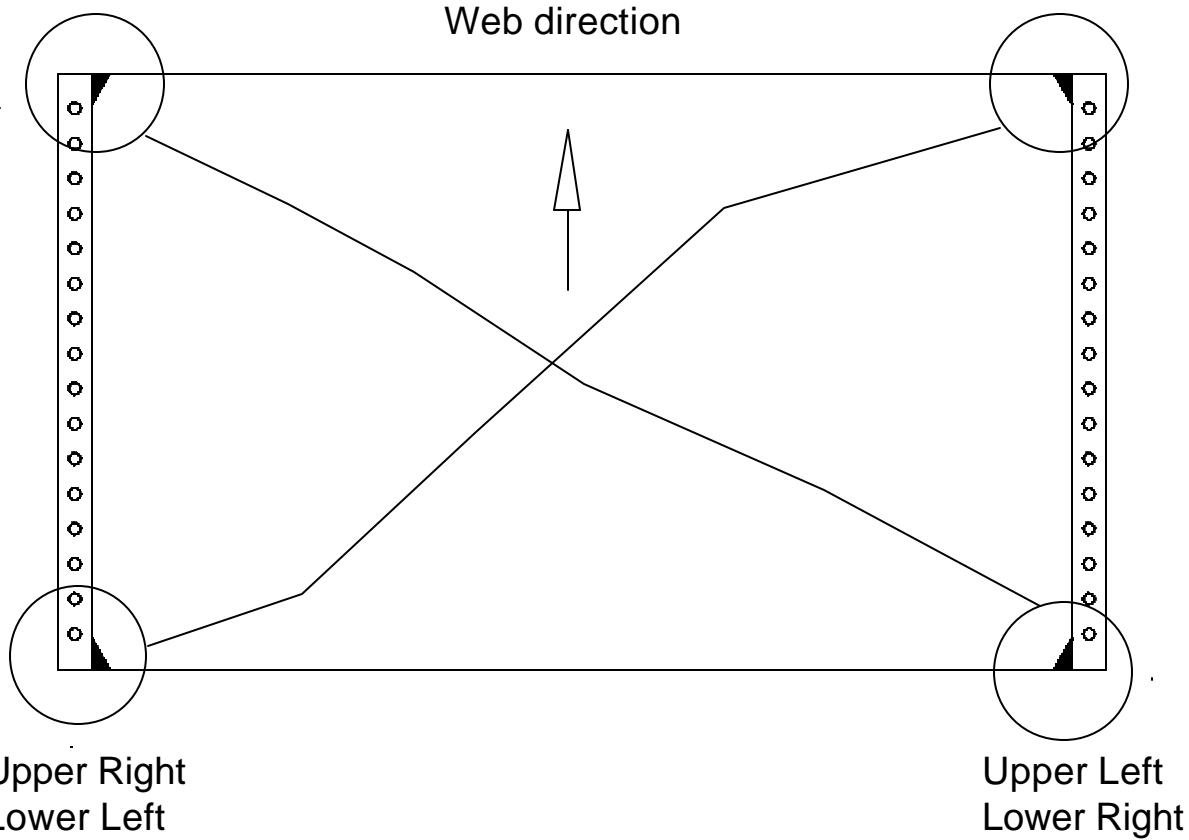
---

---

### WHICH TRIANGLE TO ORDER?

Upper Left  
Lower Right

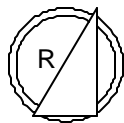
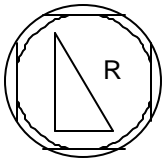
Upper Right  
Lower Left



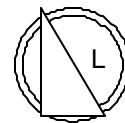
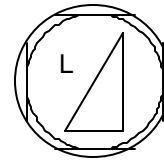
Order RD - \_\_\_\_ and RP - \_\_\_\_

Order LD - \_\_\_\_ and LP - \_\_\_\_

Enter body diameter in blank area. For example, RD-390 or RP-625



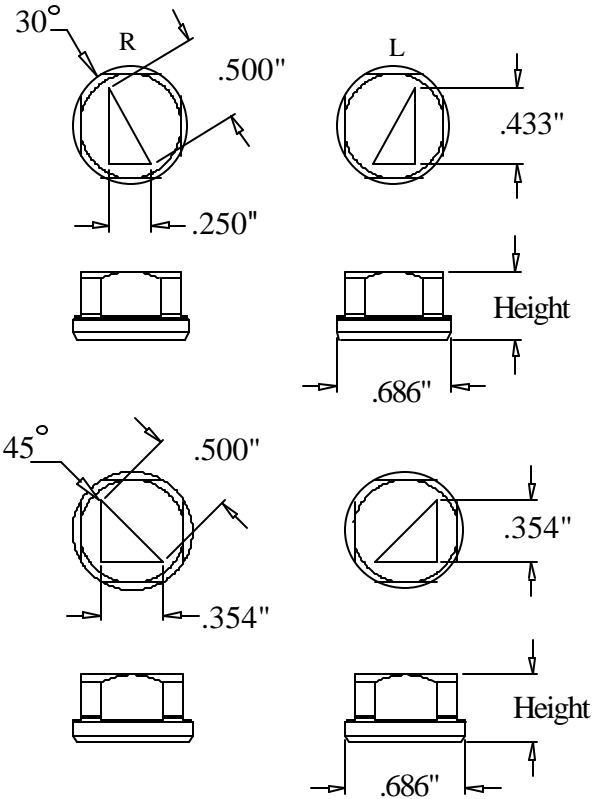
View of Die and Punch from top



View of Die and Punch from top

## Punches & Dies

**SEE PAGE 56 FOR ORDERING INFORMATION**



Triangle Dies				
Degree	Part Number	Position	Diameter	Height
30	RD-375	Right	.686"	.375"
30	LD-375	Left	.686"	.375"
45	14992	Both	.686"	.375"
30	RD-390	Right	.686"	.390"
30	LD-390	Left	.686"	.390"
45	14210	Both	.686"	.390"
30	RD-500	Right	.686"	.500"
30	LD-500	Left	.686"	.500"
45	14957	Both	.686"	.500"

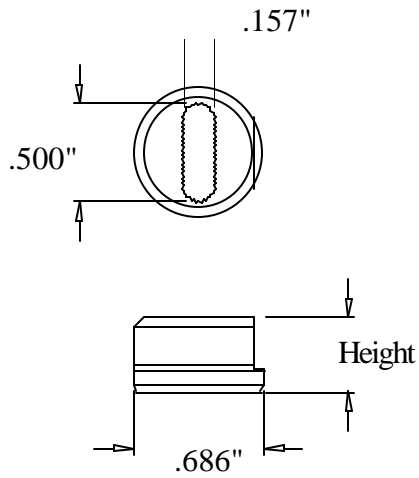


# STOCK SPECIAL SHAPES REGISTER SLOT OBLONGS

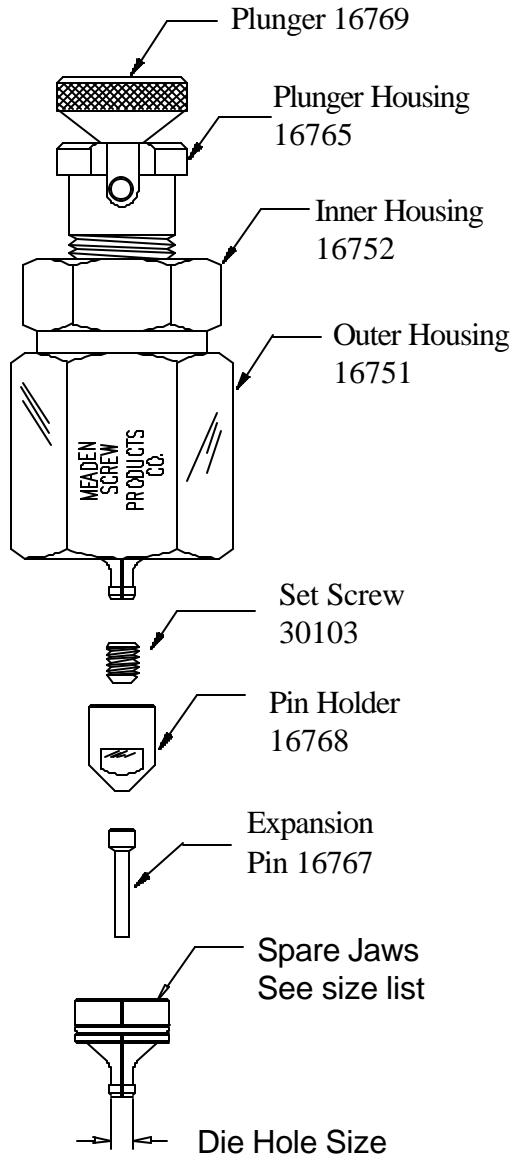
---

---

## Punches & Dies



Slot Register Dies			
Size	Part Number	Diameter	Height
5/32 x 1/2	SO-375	.686"	.375"
5/32 x 1/2	SO-390	.686"	.390"
5/32 x 1/2	SO-500	.686"	.500"
5/32 x 1/2	SO-515	.686"	.515"



Part Number	Description
13980	Complete Assembly with 5/32" Jaws
16754	1/8" Jaws
16755	5/32" Jaws
16756	3/16" Jaws
16757	7/32" Jaws
16758	1/4" Jaws
16759	9/32" Jaws
16760	5/16" Jaws
16761	11/32" Jaws
16762	3/8" Jaws
16763	13/32" Jaws
16764	7/16" Jaws
16766	1/2" Jaws
16769	Plunger
16765	Plunger Housing
16752	Inner Housing
16751	Outer Housing
16768	Pin Holder
30508	Inner Spring
31741	Expansion Pin Assembly
16767	Standard Expansion Pin
16770	Special 1/2" Expansion Pin
30103	10-32x3/8 Set Screw

Minimum Total Order \$50.00

210 W. 83rd Street, Burr Ridge, IL 60521 USA \* Phone 630-655-0888 \* FAX 630-655-3012 \* [www.meaden.com](http://www.meaden.com)

**meaden**